

# LC-R121R3PG\*1

FOR MAIN AND STANDBY POWER SUPPLIES.  
 EXPECTED TRICKLE DESIGN LIFE: 6 - 9 YEARS  
 AT 20°C ACCORDING TO EUROBAT.

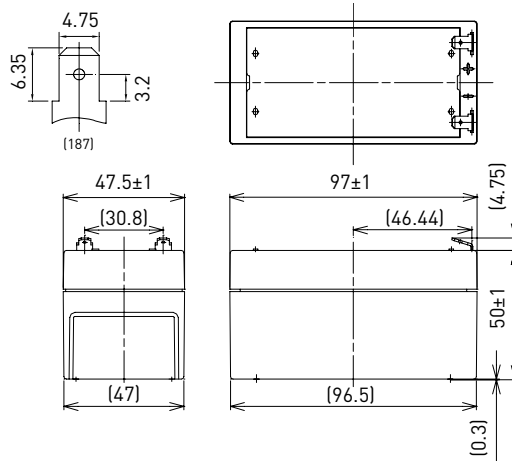


G196049

## DIMENSIONS (MM)



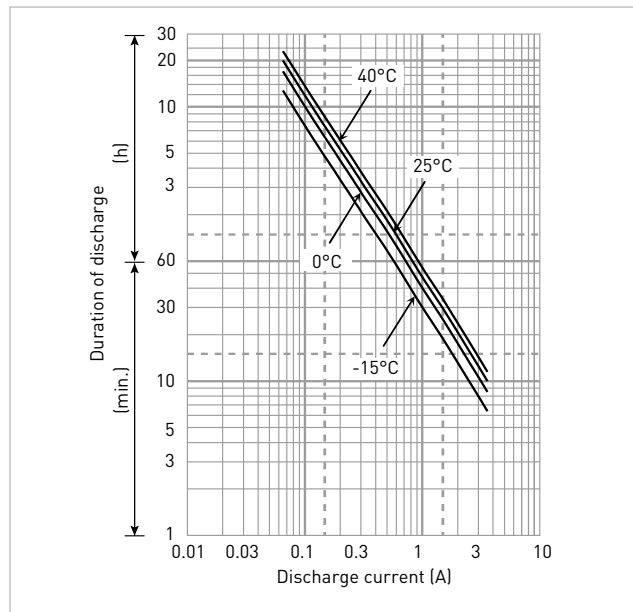
### Terminal type



Contents indicated (including the recycle marking, etc.) are subject to change without notice. Battery case resin: standard (UL94 HB)

Specifications		LC-R121R3PG*1
<b>Nominal voltage (V)</b>		12
<b>Nominal capacity</b>	<b>20 hours rate (Ah)</b>	1.3
<b>Dimensions</b>	<b>Length (mm)</b>	47.5
	<b>Width (mm)</b>	97
	<b>Total height (mm)</b>	55
<b>Approx. mass (kg)</b>		0.59
<b>Terminal type</b>		Faston 187
<b>Capacity (25°C)</b>	<b>20 hours rate (Ah)</b>	1.3
	<b>10 hours rate (Ah)</b>	1.2
	<b>3 hours rate (Ah)</b>	1.1
	<b>1 hour rate (Ah)</b>	0.9
<b>Impedance (mΩ)</b>	<b>Fully charged battery (25°C)</b>	90
	<b>Temperature dependency of capacity (%) - 20 hours rate</b>	
	40°C	102
	25°C	100
	0°C	85
	-15°C	65
<b>Remaining capacity (25°C)</b>	<b>After 3 months (%)</b>	91
	<b>After 6 months (%)</b>	82
	<b>After 12 months (%)</b>	64

## DURATION OF DISCHARGE VS. DISCHARGE CURRENT



## WATT TABLE (25°C)

(Wattage/battery)

Cut-off	3min.	5min.	10min.	15min.	20min.	30min.	45min.	1h	1.5h	2h	3h	4h	5h	6h	10h	20h
9.6V	78.1	61.6	40.2	30.7	25.8	19.2	13.6	10.8	7.49	5.73	4.32	3.30	2.73	2.22	1.46	0.787
9.9V	72.5	57.8	39.4	30.5	25.3	19.0	13.5	10.7	7.34	5.68	4.30	3.28	2.70	2.21	1.45	0.784
10.2V	66.9	54.2	38.4	29.9	24.9	18.8	13.4	10.6	7.19	5.54	4.25	3.26	2.68	2.19	1.44	0.782
10.5V	59.4	48.5	35.6	27.8	23.7	18.4	13.1	10.4	7.04	5.34	4.19	3.25	2.66	2.17	1.43	0.780
10.8V	50.2	42.9	31.7	26.0	23.0	17.7	12.9	10.2	6.82	5.13	4.08	3.24	2.60	2.16	1.41	0.758

## AMPERE TABLE (25°C)

(Ampere/battery)

Cut-off	3min.	5min.	10min.	15min.	20min.	30min.	45min.	1h	1.5h	2h	3h	4h	5h	6h	10h	20h
9.6V	7.02	5.53	3.59	2.67	2.22	1.64	1.16	0.921	0.634	0.484	0.363	0.276	0.228	0.185	0.122	0.0655
9.9V	6.52	5.18	3.52	2.65	2.18	1.63	1.15	0.912	0.621	0.480	0.361	0.274	0.226	0.184	0.121	0.0654
10.2V	6.01	4.86	3.43	2.60	2.15	1.61	1.14	0.903	0.609	0.468	0.358	0.273	0.224	0.183	0.120	0.0652
10.5V	5.34	4.35	3.18	2.42	2.04	1.57	1.12	0.885	0.596	0.451	0.352	0.272	0.222	0.182	0.119	0.0650
10.8V	4.51	3.85	2.83	2.26	1.99	1.52	1.10	0.867	0.578	0.433	0.343	0.271	0.217	0.181	0.117	0.0632

All mentioned values are average values

\*1 This battery is also available with a flame-retardant battery case resin (UL94 V-0): LC-V121R3PG.

# LC-R121R3PG\*1

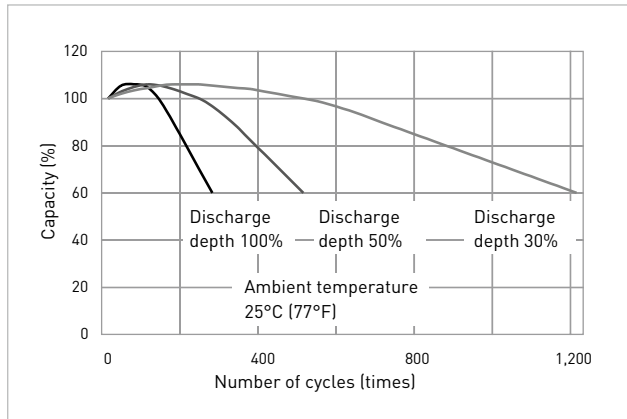
## CHARGING METHOD (25°C)

<b>Cycle use</b>	Control voltage: 14.5V - 14.9V Initial current: 0.52A or smaller
------------------	---

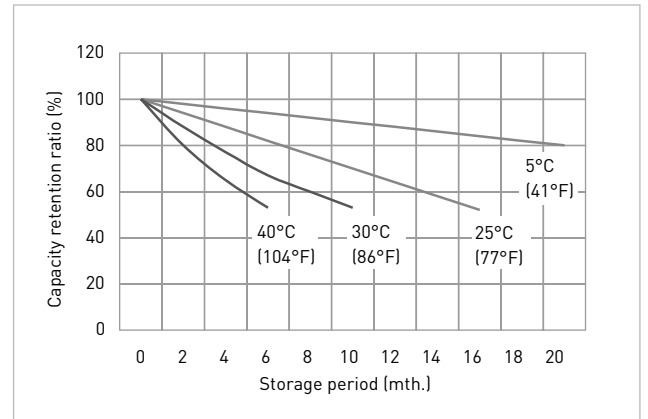
## CUT-OFF VOLTAGE

<b>Discharge current</b>	0.065A - 0.26A	0.26A - 0.65A	0.65A - 1.3A	1.3A - 2.6A	2.6A - 3.9A
<b>Cut-off voltage</b>	10.5V	10.2V	9.9V	9.3V	8.7V

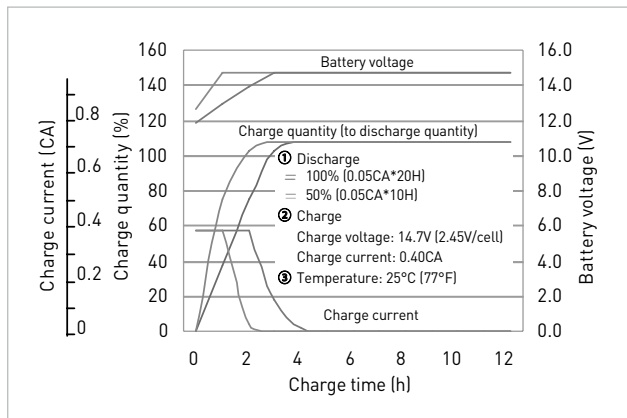
## CYCLE LIFE VS. DEPTH OF DISCHARGE (ACC. IEC 61056)



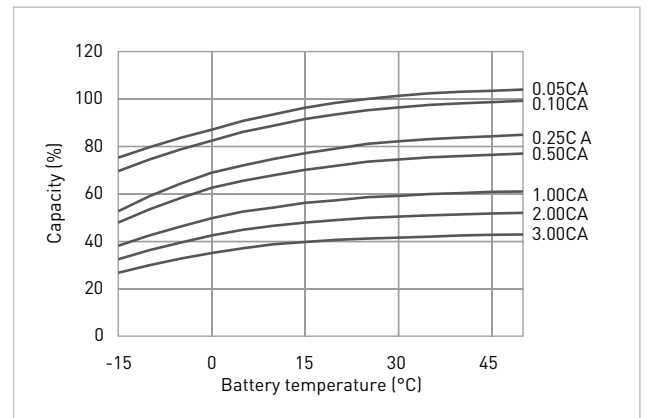
## RESIDUAL CAPACITY TEST RESULT



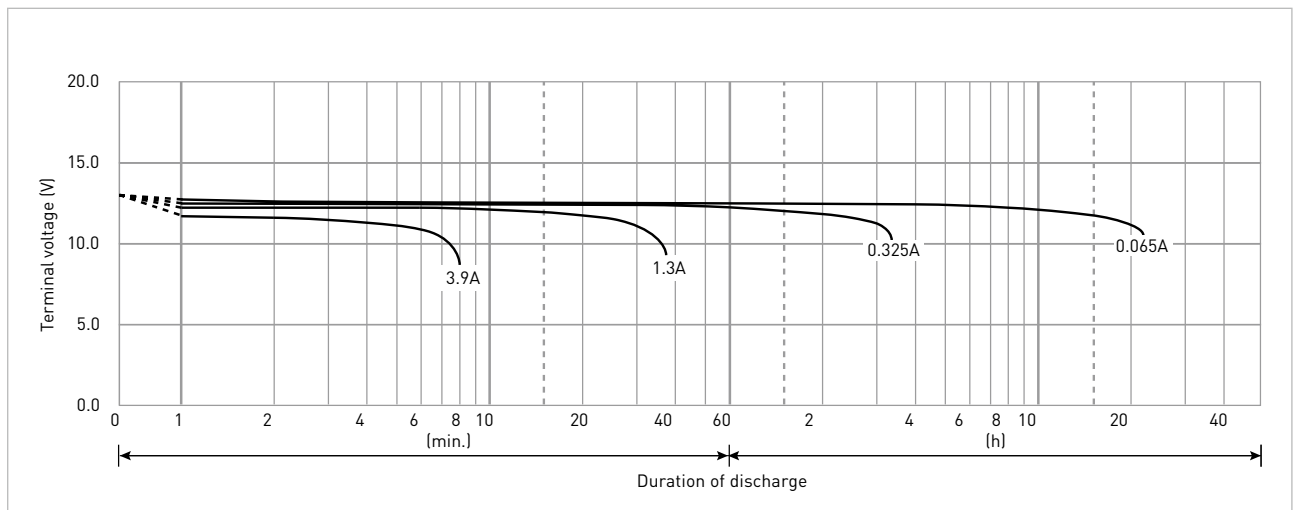
## CONSTANT-VOLTAGE CONSTANT-CURRENT CHARGE CHARACTERISTICS FOR CYCLE USE



## DISCHARGE CAPACITY BY TEMPERATURE AND BY DISCHARGE CURRENT



## DISCHARGE CHARACTERISTICS



\*1 This battery is also available with a flame-retardant battery case resin (UL94 V-0): LC-V121R3PG.